



Double Bayou WPP Water Quality Management Plans

Double Bayou Watershed Partnership
Meeting

May 23, 2018



Agency Role



Water Quality Mandate - Texas Agriculture Code §201.026

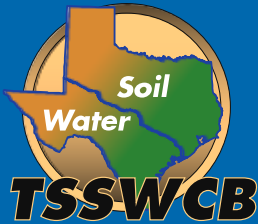
Texas State Soil and Water Conservation Board (TSSWCB) is the lead agency in Texas responsible for planning, implementing and managing programs and practices for abating agricultural and silvicultural nonpoint source water pollution.



Agency Role



- Provide technical and financial assistance to local soil and water conservation districts
 - *Local districts encourage landowners and agricultural producers to voluntarily conserve natural resources on their private lands through the implementation of best management practices*
- Results in a positive impact on state water resources, and protects soil quality which supports the strength of Texas' agricultural economy



How this gets done



TSSWCB administers several programs to achieve conservation goals across the state, they include:

- **Water Quality Management Plan Program**
- Nonpoint Source Grant Program
- Water Supply Enhancement Program (Brush control)
- Flood Control Program



WQMP Program History



- Created by the 73rd Texas Legislature in 1993 through Senate Bill 503 (often referred to as 503 Program, or 503 plans, or 503 cost-share)
- Voluntary enrollment in WQMP Program for farmers and ranchers, except that the 77th Texas Legislature in 2001 (Senate Bill 1339) said poultry operations must obtain a WQMP



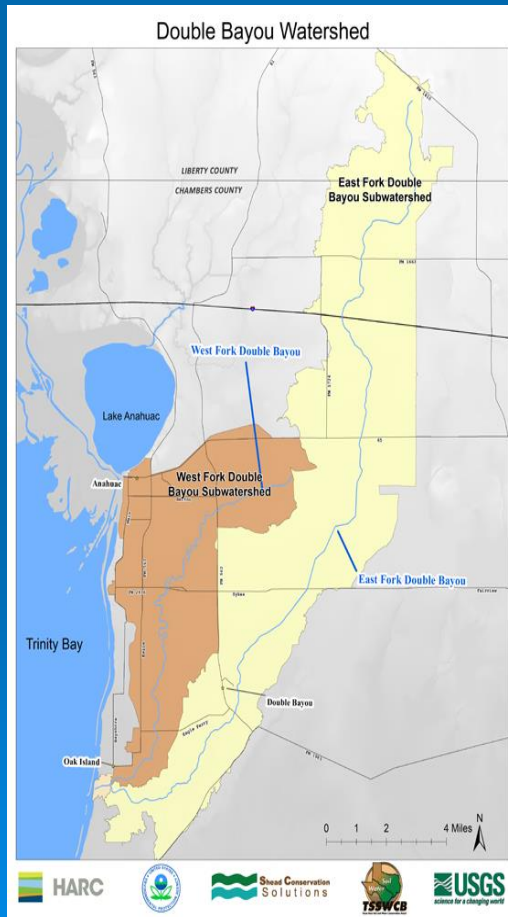
WQMPs



- Cover the entire farm or ranch
- Specifically designed to achieve pollution prevention/abatement
- Texas Water Code §26.121



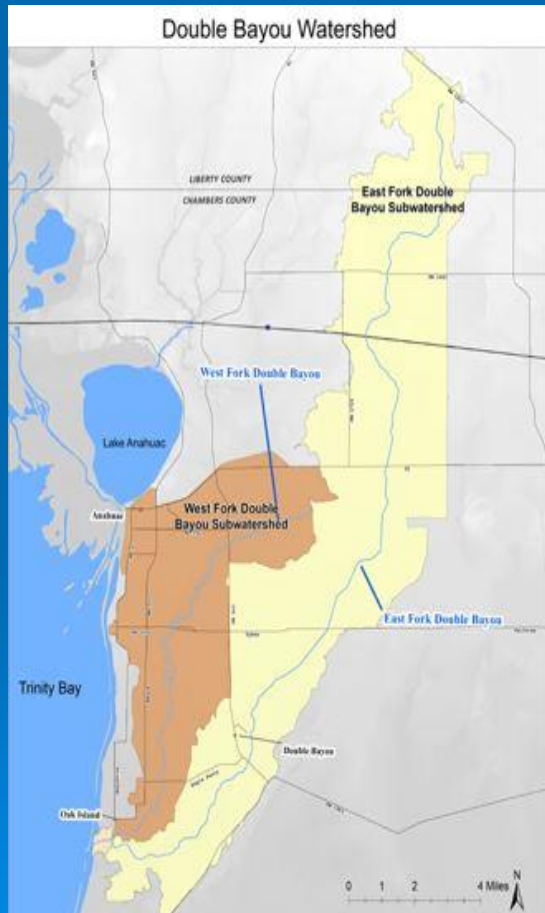
Double Bayou Watershed Protection Project



The Double Bayou Watershed is located on the upper Texas Gulf Coast and is part of the Galveston Bay Watershed, it is comprised of two main sub-watersheds: East Fork Double Bayou and West Fork Double Bayou, which are the primary waterways in the watershed. The double Bayou Watershed drains 98 square miles (61,445 acres) of predominantly rural and agricultural land. The Double Bayou Watershed drains directly into the Trinity Bay System and ultimately into Galveston Bay. Today, the lands and waters in and around Double Bayou support: rice farming, cattle grazing, oil production, small town and country living, industrial and commercial navigation, sailing, paddling, crabbing, oystering, recreational fishing and wildlife watching.



Double Bayou Watershed Protection Project



The West Fork of Double Bayou was listed since 2004 as not meeting the State Water Quality Standard for low dissolved oxygen for aquatic life and for elevated levels of bacteria for contact recreation.

The East Fork of Double Bayou was identified as a concern for near-nonattainment of the standards for elevated levels of bacteria and as a concern for water quality based on screening levels for low dissolved oxygen.



Double Bayou Watershed Protection Project

The Trinity Bay Soil and Water Conservation District and Texas State Soil and Water Conservation Board has partnered to provide technical and financial assistance to farmers and ranchers in order to reduce bacteria and nutrients in Double Bayou through implementation of Best Management Practices on agricultural lands. Through a grant, the Trinity Bay SWCD will aid producers in the development, certification and implementation of Water Quality Management Plans (WQMPs) on pastureland, rangeland and cropland.



Double Bayou Watershed Protection Project

Benefits of Participating

By partnering with Trinity Bay SWCD to implement a WQMP on your agricultural land, you will:

- Demonstrate that voluntary conservation programs promote agricultural production and environmental quality as compatible goals.
- Implement the Double Bayou Watershed Protection Plan to restore water quality in our local streams and creeks.
- Demonstrate to the State of Texas that you are voluntarily using the best available technology to prevent nonpoint source water pollution and comply with State Water Quality Standards.



Double Bayou Watershed Protection Project

Benefits of Participating

- Have a strategic plan developed for your agricultural operation to help make decisions on how to best manage your natural resources.
- Demonstrate to other sectors in the watershed (industry, municipalities, and urban residents) that agriculture is doing our part to protect our local water resources.
- Enhance the value of your operation and achieve watershed-wide environmental goals at the same time.
- Be eligible for certain forms of financial assistance to help defray costs of implementing management practices on your land.



How to get a WQMP

- An individual requests planning assistance through the Trinity Bay or Lower Trinity SWCD
- The WQMP is usually developed by the SWCD Technician (Jimmy Weaver) with NRCS and TSSWCB assistance
- The WQMP is approved by the landowner, the SWCD and NRCS and then certified by the TSSWCB
- Producer implements the WQMP on their land
- Annual status reviews are conducted to ensure that the landowner implements BMPs as agreed to in the implementation schedule



Financial Assistance

State (TSSWCB) or Federal (NRCS) assistance is obtainable for certain conservation practices

➤ CWA Section 319 funding

Practices Eligible for 60% cost-share, up to \$15,000 per WQMP



Double Bayou Watershed Protection Project

Double Bayou WPP at Work

- Trinity Bay SWCD hired a District Technician – 2/1/2017
- New producer Water Quality Management Plans certified – 2.
- Previously certified Water Quality Management Plans re-certified – 2
- Previously certified Water Quality Plans are in the work for re-certification – 2
- New producer Water Quality Management Plans requested - 2
- District Technician is corresponding with other landowners, farmers and ranchers of the benefits of obtaining Water Quality Management Plans for their property's resources.



Contact



Jimmy Weaver
Trinity Bay SWCD
District Technician
(409) 267-3581
(936)641-7366

James.weaver@tx.nacdnet.net

Questions?





Brian Koch
Regional Watershed Coordinator

Texas State Soil and Water Conservation Board

Wharton Regional Office
1120 Hodges Ln
Wharton, TX 77488

979-532-9496 v
979-532-8765 f

bkoch@tsswcb.texas.gov
<http://www.tsswcb.texas.gov/>
<http://www.tsswcb.texas.gov/cwp>

*Authorization for use or reproduction of any original material
contained in this presentation is freely granted.
TSSWCB would appreciate acknowledgement.*